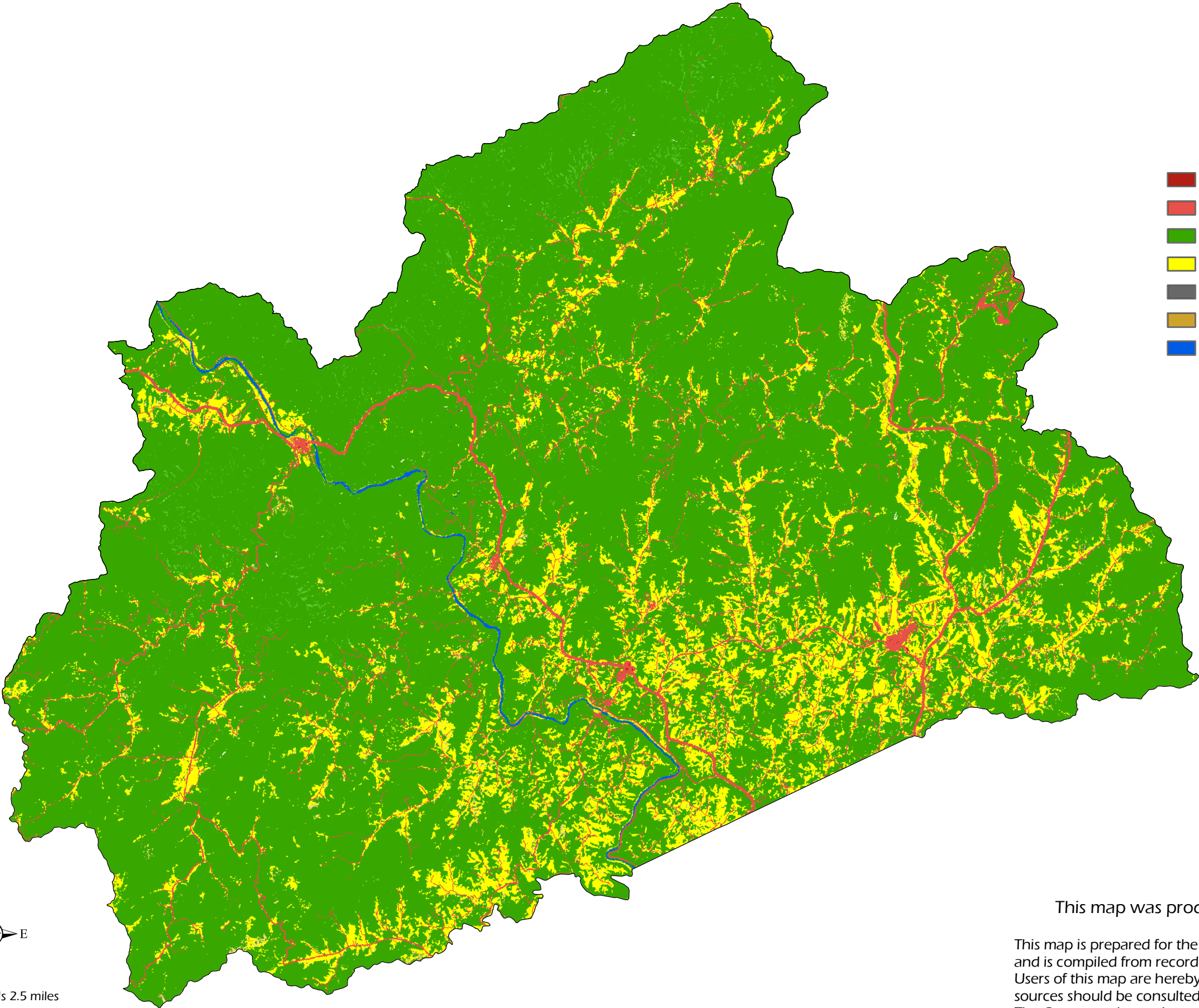


# Madison County Comprehensive Plan

- High Intensity Developed
- Medium/Low Intensity Developed
- Forest
- Cropland
- Quarry/Strip Mine/Gravel Pit
- Clearcut / Grassland
- Open Water (Fresh)



1 inch equals 2.5 miles

0 1 2 3 4 5 Miles

Source: 2001 USGS National Land Cover Dataset

This map was produced by Land-of-Sky Regional Council

This map is prepared for the inventory of real property found within this jurisdiction, and is compiled from recorded deeds, plats, and other public records and data. Users of this map are hereby notified that the aforementioned public primary information sources should be consulted for verification of the information contained on this map. The County and mapping company assume no legal responsibility for the information contained on this map.