










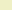
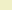

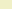


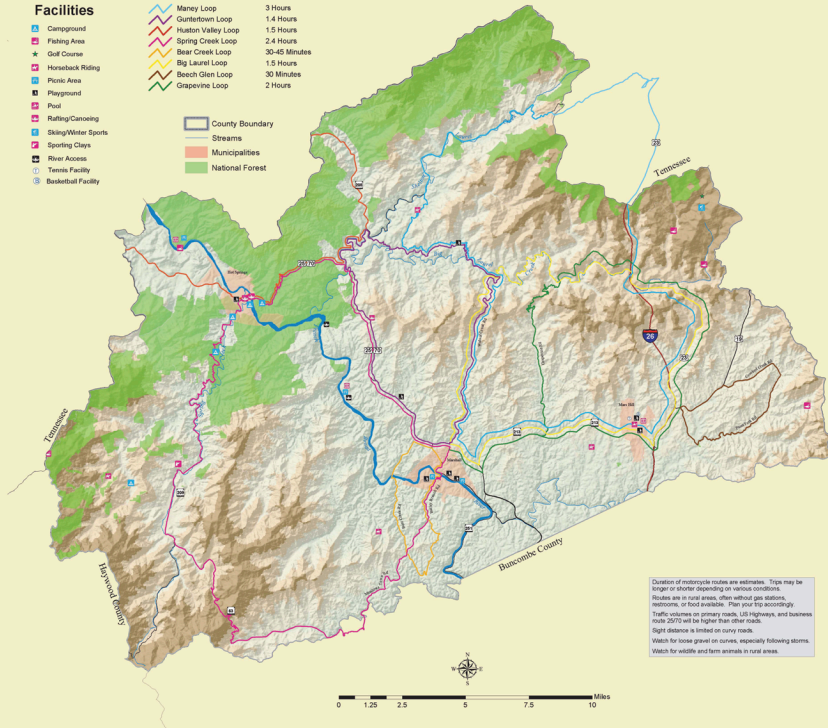
Recreation Facilities

-  Campground
-  Fishing Area
-  Golf Course
-  Horseback Riding
-  Picnic Area
-  Playground
-  Pool
-  Rafting/Canoeing
-  Skiing/Winter Sports
-  Sporting Clays
-  River Access
-  Tennis Facility
-  Basketball Facility

Motorcycle Routes

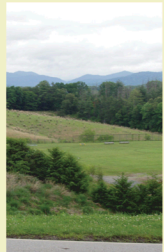
-  Maney Loop 3 Hours
-  Guntertown Loop 1.4 Hours
-  Hudson Valley Loop 1.5 Hours
-  Spring Creek Loop 2.4 Hours
-  Bear Creek Loop 30-45 Minutes
-  Big Laurel Loop 1.5 Hours
-  Beech Glen Loop 30 Minutes
-  Grapevine Loop 2 Hours

-  County Boundary
-  Streams
-  Municipalities
-  National Forest



Duration of motorcycle routes are estimates. Trips may be longer or shorter depending on various conditions. Routes are in rural areas, often without gas stations, restrooms, or food available. Plan your trip accordingly. Traffic volumes on primary roads, US Highways, and business route 25/79 will be higher than other roads. Sight distance is limited on curvy roads. Watch for loose gravel on curves, especially following storms. Watch for wildlife and farm animals in rural areas.

Madison County, NC Recreation Map



Hiking Trails Bicycle Routes Motorcycle Routes Recreational Facilities

Map Furnished by the Madison County
Tourism Development Authority



In Conjunction with
Land-of-Sky Regional Council



Please Visit our Website
www.visitmadisoncounty.com