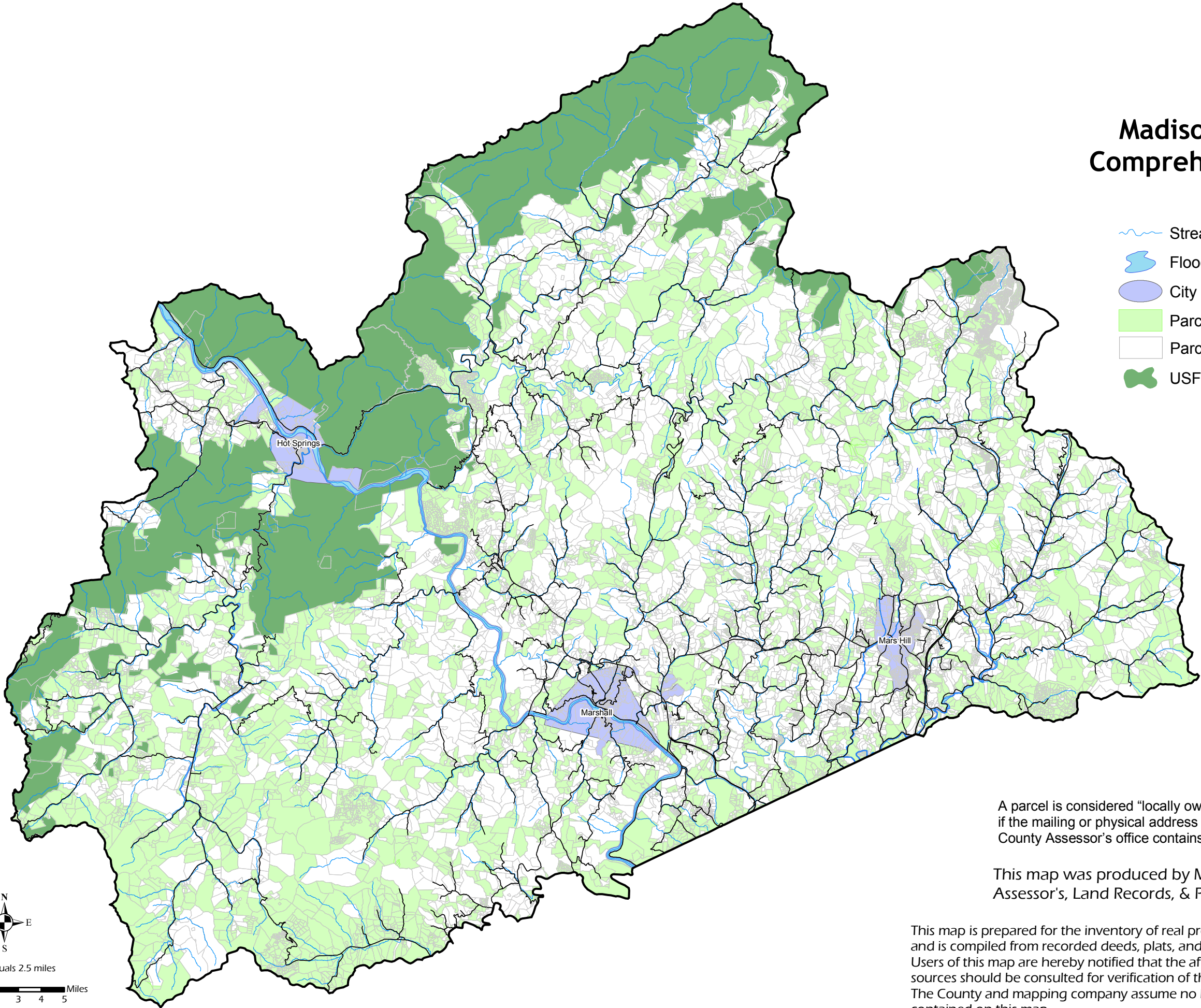


# Madison County Comprehensive Plan

-  Streams
-  Floodway
-  City Limits
-  Parcels not Locally Owned
-  Parcels Locally Owned
-  USFS



A parcel is considered “locally owned” on this map if the mailing or physical address on record at the County Assessor’s office contains a Madison County zip code.

This map was produced by Madison County GIS, Assessor’s, Land Records, & Planning Departments.

This map is prepared for the inventory of real property found within this jurisdiction, and is compiled from recorded deeds, plats, and other public records and data. Users of this map are hereby notified that the aforementioned public primary information sources should be consulted for verification of the information contained on this map. The County and mapping company assume no legal responsibility for the information contained on this map.

