

SAMPLE BALLOT

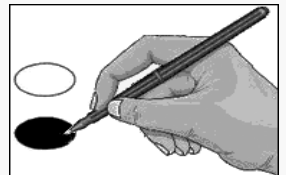
Sample Ballot
Madison County, North Carolina
November 6, 2018



G002

BALLOT MARKING INSTRUCTIONS:

- A. With the marking device provided or a black ball point pen, completely fill in the oval to the left of each candidate or selection of your choice as shown.
- B. Where authorized, you may write in a candidate by filling in the oval and writing the name on the Write-in line.
- C. If you tear, deface or wrongly mark this ballot, return it to request a replacement.



FEDERAL OFFICES	COUNTY OFFICES	JUDICIAL OFFICES
<p style="text-align: center;">US House of Representatives District 11 (You may vote for ONE)</p> <p><input type="radio"/> Clifton B. Ingram, Jr. Libertarian</p> <p><input type="radio"/> Mark Meadows Republican</p> <p><input type="radio"/> Phillip G. Price Democrat</p>	<p style="text-align: center;">Board of Commissioners (You may vote for THREE)</p> <p><input type="radio"/> Norris Gentry Democrat</p> <p><input type="radio"/> Craig D. Goforth Democrat</p> <p><input type="radio"/> April Riddle Republican</p> <p><input type="radio"/> Mark Snelson Democrat</p> <p><input type="radio"/> Randy Tweed Republican</p> <p><input type="radio"/> C. William (Bill) Briggs Republican</p>	<p>No primaries for judicial office were held in 2018. The information listed by each of the following candidates' names indicates only the candidates' party affiliation or unaffiliated status on their voter registration at the time they filed to run for office.</p>
<p>STATE OFFICES</p>		<p style="text-align: center;">NC Supreme Court Associate Justice Seat 1 (You may vote for ONE)</p> <p><input type="radio"/> Barbara Jackson Republican</p> <p><input type="radio"/> Christopher (Chris) Anglin Republican</p> <p><input type="radio"/> Anita Earls Democrat</p>
<p style="text-align: center;">NC State Senate District 47 (You may vote for ONE)</p> <p><input type="radio"/> Ralph Hise Republican</p> <p><input type="radio"/> David Wheeler Democrat</p>	<p style="text-align: center;">Board of Education Chair (You may vote for ONE)</p> <p><input type="radio"/> Karen Blevins Democrat</p>	<p style="text-align: center;">NC Court of Appeals Judge Seat 1 (You may vote for ONE)</p> <p><input type="radio"/> Andrew T. Heath Republican</p> <p><input type="radio"/> John S. Arrowood Democrat</p>
<p style="text-align: center;">NC House of Representatives District 118 (You may vote for ONE)</p> <p><input type="radio"/> Michele D. Presnell Republican</p> <p><input type="radio"/> Rhonda Cole Schandavel Democrat</p>	<p style="text-align: center;">Board of Education District 1 (You may vote for ONE)</p> <p><input type="radio"/> Barbara E. Wyatt Democrat</p>	<p style="text-align: center;">NC Court of Appeals Judge Seat 2 (You may vote for ONE)</p> <p><input type="radio"/> Jefferson G. Griffin Republican</p> <p><input type="radio"/> Tobias (Toby) Hampson Democrat</p> <p><input type="radio"/> Sandra Alice Ray Republican</p>
<p>PROSECUTORIAL OFFICES</p>	<p style="text-align: center;">Clerk of Superior Court (You may vote for ONE)</p> <p><input type="radio"/> Mark A. Cody Democrat</p>	
<p style="text-align: center;">District Attorney District 35 (You may vote for ONE)</p> <p><input type="radio"/> Seth Banks Republican</p>	<p style="text-align: center;">Sheriff (You may vote for ONE)</p> <p><input type="radio"/> Buddy Harwood Democrat</p>	<p style="text-align: center;">NC Court of Appeals Judge Seat 3 (You may vote for ONE)</p> <p><input type="radio"/> Chuck Kitchen Republican</p> <p><input type="radio"/> Michael Monaco, Sr. Libertarian</p> <p><input type="radio"/> Allegra Katherine Collins Democrat</p>
		<p>Continue voting next side </p>

-- VOTE BOTH SIDES --

D	PCT EBBS C	E	EBBS CHAPEL	F	
NC Superior Court Judge District 24 Seat 1 (You may vote for ONE)		Constitutional Amendment		Constitutional Amendment	
<input type="radio"/> Gary Gavenus Republican		Constitutional amendment to reduce the income tax rate in North Carolina to a maximum allowable rate of seven percent (7%). <input type="radio"/> For <input type="radio"/> Against		Constitutional amendment to establish an eight-member Bipartisan Board of Ethics and Elections Enforcement in the Constitution to administer ethics and elections law. <input type="radio"/> For <input type="radio"/> Against	
NC District Court Judge District 24 Seat 1 (You may vote for ONE)					
<input type="radio"/> Larry Leake Democrat					
NONPARTISAN OFFICES		Constitutional Amendment		Madison County Local Sales and Use Tax	
Soil and Water Conservation District Supervisor (You may vote for TWO)		Constitutional amendment to require voters to provide photo identification before voting in person. <input type="radio"/> For <input type="radio"/> Against		Local sales and use tax at the rate of one-quarter percent (0.25%) in addition to all other State and local sales and use taxes. <input type="radio"/> For <input type="radio"/> Against	
<input type="radio"/> Clyde Hagan					
<input type="radio"/> Russell C. Blevins <input type="radio"/> Write-in <input type="radio"/> Write-in					
REFERENDA		Constitutional Amendment		End of Ballot	
Constitutional Amendment		Constitutional amendment to change the process for filling judicial vacancies that occur between judicial elections from a process in which the Governor has sole appointment power to a process in which the people of the State nominate individuals to fill vacancies by way of a commission comprised of appointees made by the judicial, executive, and legislative branches charged with making recommendations to the legislature as to which nominees are deemed qualified; then the legislature will recommend at least two nominees to the Governor via legislative action not subject to gubernatorial veto; and the Governor will appoint judges from among these nominees. <input type="radio"/> For <input type="radio"/> Against			
Constitutional amendment protecting the right of the people to hunt, fish, and harvest wildlife. <input type="radio"/> For <input type="radio"/> Against					
Constitutional Amendment					
Constitutional amendment to strengthen protections for victims of crime; to establish certain absolute basic rights for victims; and to ensure the enforcement of these rights. <input type="radio"/> For <input type="radio"/> Against					
D		E	North Carolina	F	

S
A
M
P
L
E

B
A
L
L
O
T

-- VOTE BOTH SIDES --