

January 6, 2022

North Carolina COVID-19 Metrics

Updated Monday-Friday by the NC Department of Health and Human Services at approximately noon. Last updated 12:00 p.m., Jan. 6, 2021.

24,292

Newly Reported Cases

30.1%

Daily Percent Positive

3,293

Currently Hospitalized

19,586

Total Deaths

74%*

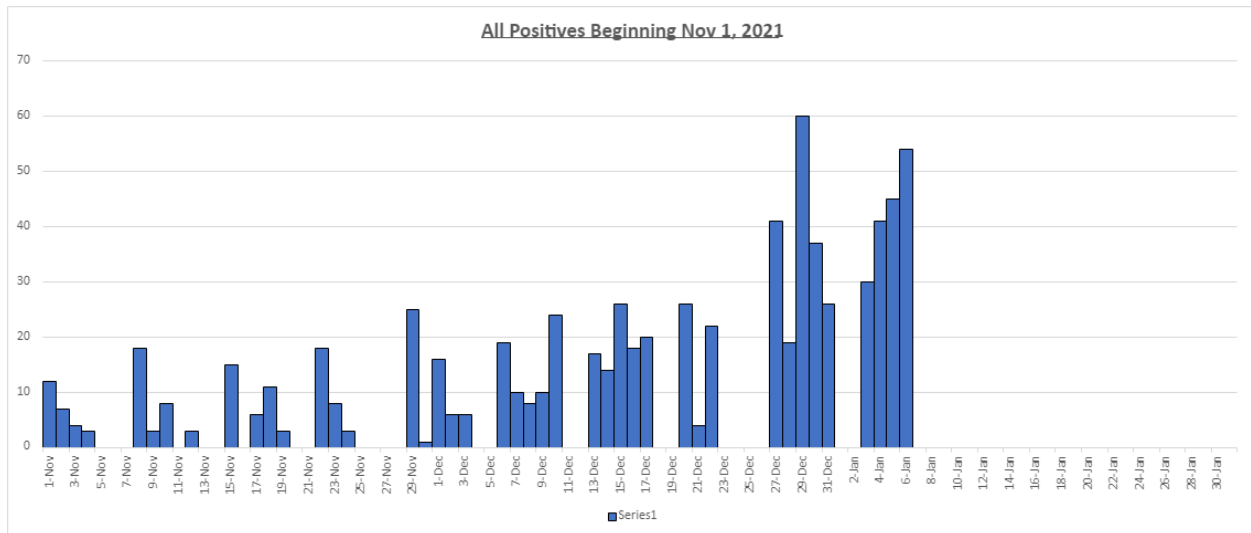
Percent of Adult Population
Vaccinated with at Least One
Dose

70%*

Percent of Adult Population
Fully Vaccinated

**Vaccination percentages rounded to whole numbers.*

Madison County Metrics: Total lab confirmed Covid-19 positive cases since Nov.1 2021



Madison County School Age Children:

