

January 11, 2022

## North Carolina COVID-19 Metrics

Updated Monday-Friday by the NC Department of Health and Human Services at approximately noon. Last updated 11:55 a.m., Jan. 11, 2021.

**17,705**

Newly Reported Cases

**30.5%**

Daily Percent Positive

**3,991**

Currently Hospitalized

**19,706**

Total Deaths

**74%\***

Percent of Adult Population  
Vaccinated with at Least One  
Dose

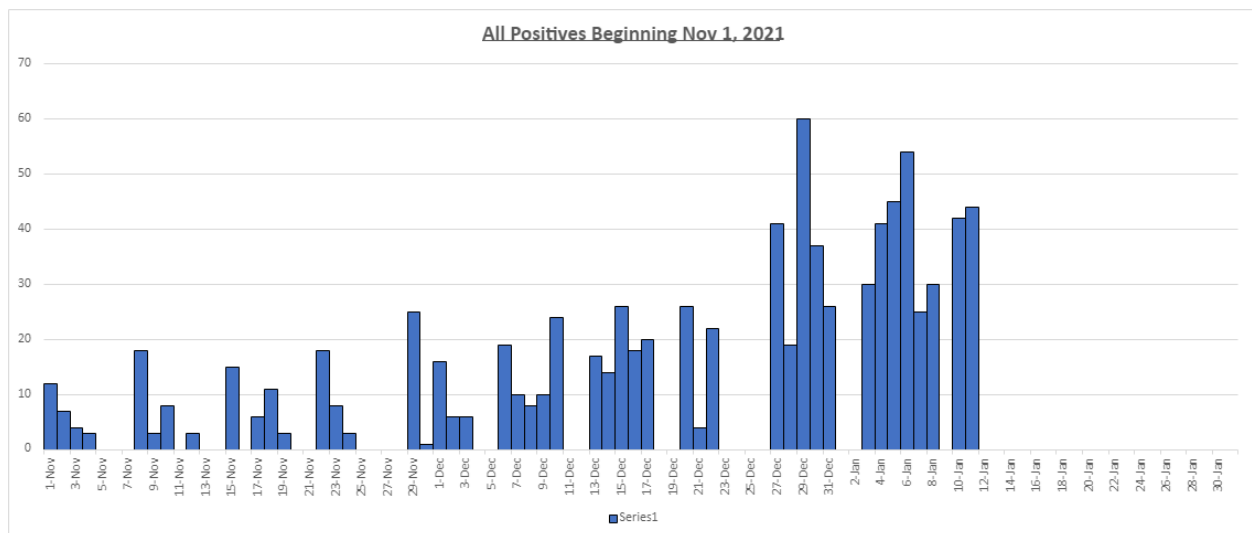
**70%\***

Percent of Adult Population  
Fully Vaccinated

\*Vaccination percentages rounded to whole numbers.

[NC COVID-19 Dashboard](#) →

### Madison County Metrics: Total lab confirmed Covid-19 positive cases since Nov.1 2021



Madison County School Age Children:

