

February 7, 2022

North Carolina COVID-19 Metrics

Updated Monday-Friday by the NC Department of Health and Human Services at approximately noon. Last updated 12:00 p.m., Feb. 7, 2022.

Delays in laboratories reporting tests to NCDHHS may occur as laboratories are processing unprecedented numbers of COVID-19 tests.

4,727

Newly Reported Cases

19.3%

Daily Percent Positive

4,032

Currently Hospitalized

21,249

Total Deaths

75%*

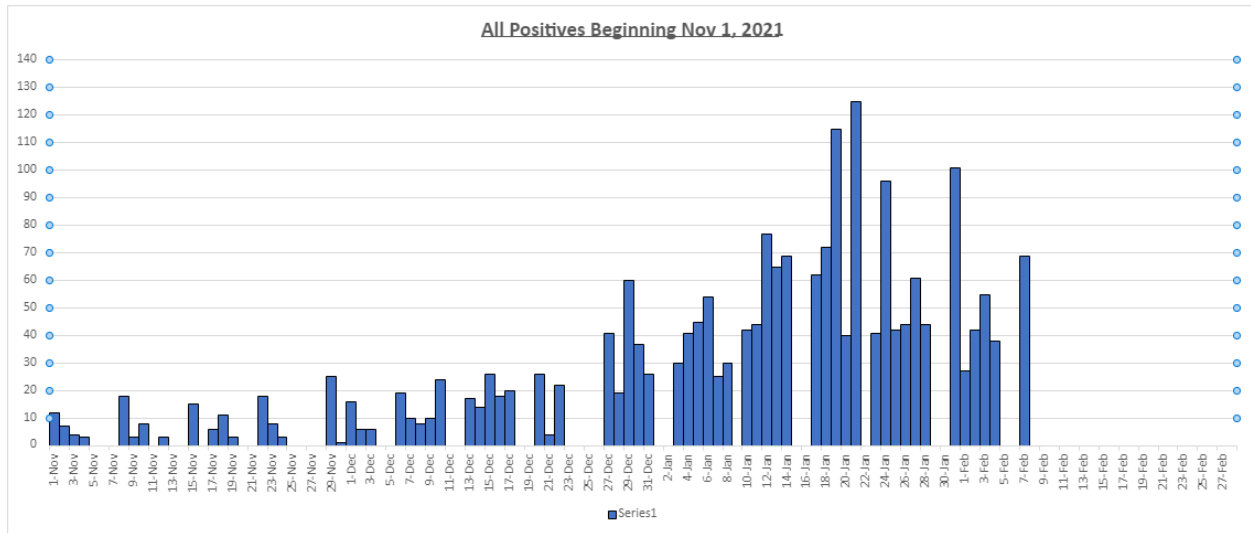
Percent of Adult Population Vaccinated with at Least One Dose

71%*

Percent of Adult Population Vaccinated with Two Doses or One Dose J&J

*Vaccination percentages rounded to whole numbers.

Madison County Metrics: Total lab confirmed Covid-19 positive cases since Nov.1 2021



MADISON DAILY COVID-19 REPORT

Madison County School Age Children:

