

February 3, 2022

North Carolina COVID-19 Metrics

Updated Monday-Friday by the NC Department of Health and Human Services at approximately noon. Last updated 12:10 p.m., Feb. 3, 2022.

Delays in laboratories reporting tests to NCDHHS may occur as laboratories are processing unprecedented numbers of COVID-19 tests.

14,966
Newly Reported Cases

22.2%
Daily Percent Positive

4,556
Currently Hospitalized

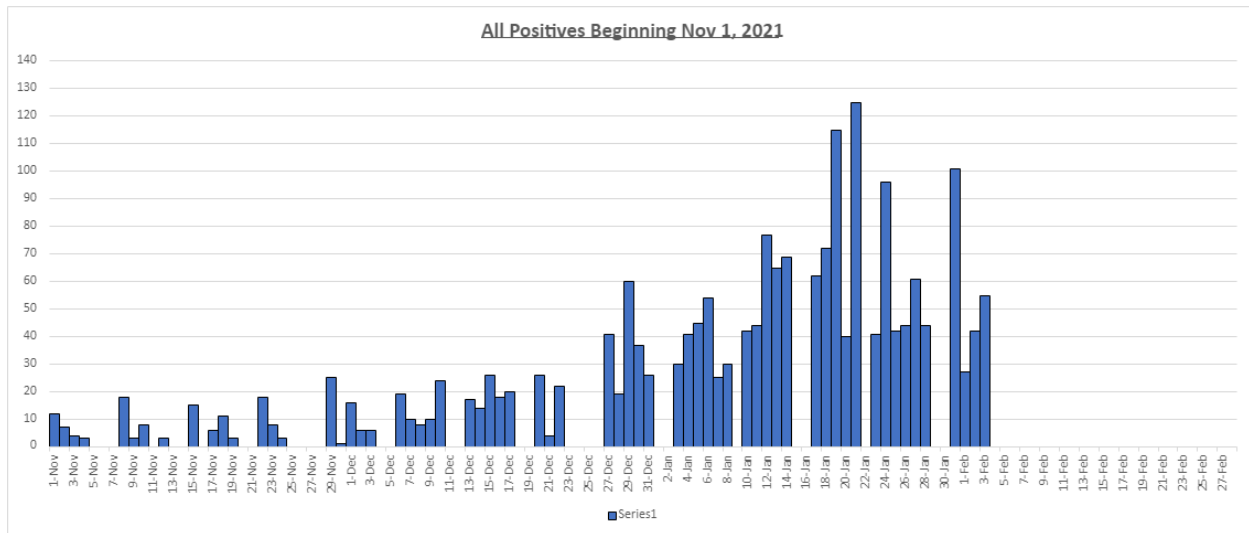
21,027
Total Deaths

75%*
Percent of Adult Population
Vaccinated with at Least One
Dose

71%*
Percent of Adult Population
Vaccinated with Two Doses
or One Dose J&J

*Vaccination percentages rounded to whole numbers.

Madison County Metrics: Total lab confirmed Covid-19 positive cases since Nov.1 2021



MADISON DAILY COVID-19 REPORT

Madison County School Age Children:

