

February 28, 2022

North Carolina COVID-19 Metrics

Updated Monday-Friday by the NC Department of Health and Human Services at approximately noon. Last updated 12:45 p.m., Feb. 28, 2022.

Delays in laboratories reporting tests to NCDHHS may occur as laboratories are processing unprecedented numbers of COVID-19 tests.

909
Newly Reported Cases

6.9%
Daily Percent Positive

1,618
Currently Hospitalized

22,570
Total Deaths

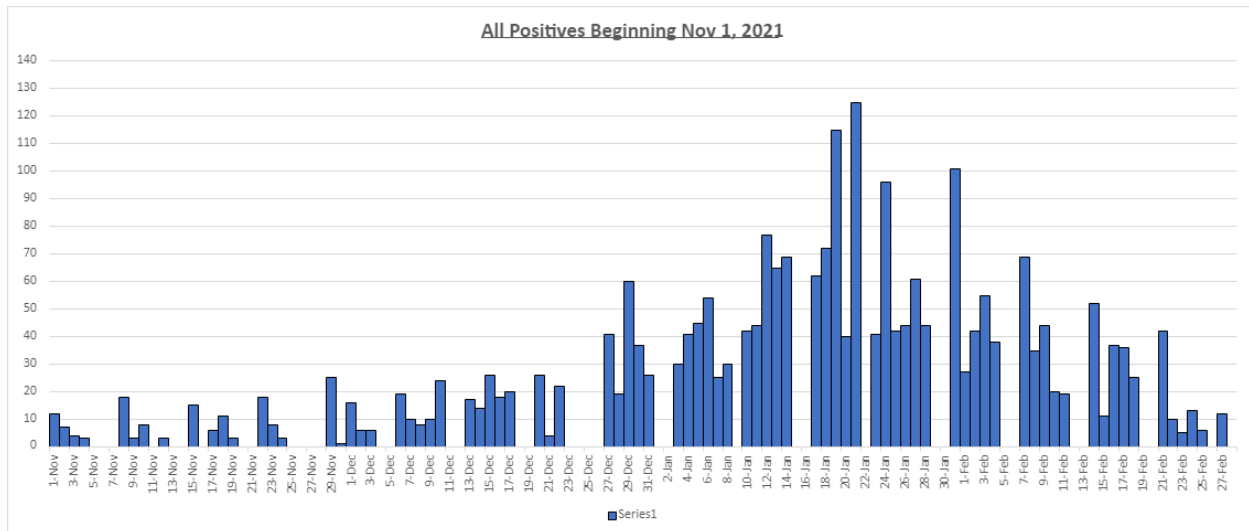
75%*
Percent of Adult Population
Vaccinated with at Least One
Dose

71%*
Percent of Adult Population
Vaccinated with Two Doses
or One Dose J&J

*Vaccination percentages rounded to whole numbers.

[NC COVID-19 Dashboard](#) →

Madison County Metrics: Total lab confirmed Covid-19 positive cases since Nov.1 2021



MADISON DAILY COVID-19 REPORT

Madison County School Age Children:

