

February 22, 2022

## North Carolina COVID-19 Metrics

Updated Monday-Friday by the NC Department of Health and Human Services at approximately noon. Last updated 12:05 p.m., Feb. 22, 2022.

*Delays in laboratories reporting tests to NCDHHS may occur as laboratories are processing unprecedented numbers of COVID-19 tests.*

**1,716**  
Newly Reported Cases

**11.9%**  
Daily Percent Positive

**2,215**  
Currently Hospitalized

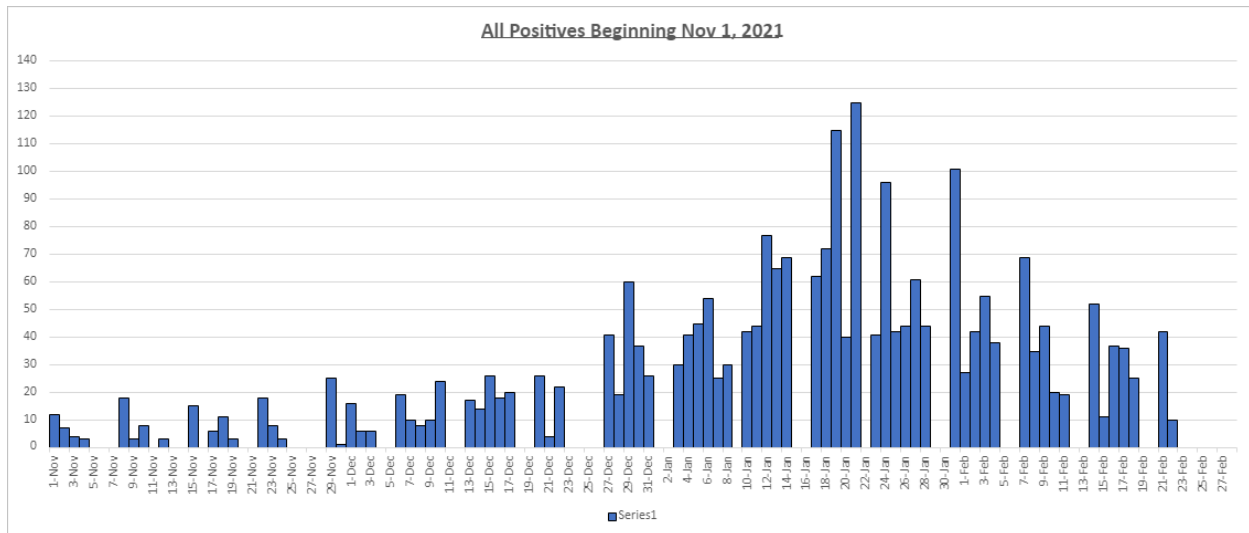
**22,296**  
Total Deaths

**75%\***  
Percent of Adult Population  
Vaccinated with at Least One  
Dose

**71%\***  
Percent of Adult Population  
Vaccinated with Two Doses  
or One Dose J&J

\*Vaccination percentages rounded to whole numbers.

### Madison County Metrics: Total lab confirmed Covid-19 positive cases since Nov.1 2021



# MADISON DAILY COVID-19 REPORT

## Madison County School Age Children:

