

MADISON DAILY COVID-19 REPORT

February 1, 2022

Updated Monday-Friday by the NC Department of Health and Human Services at approximately noon. Last updated 12:05 p.m., Feb. 1, 2022.

Delays in laboratories reporting tests to NCDHHS may occur as laboratories are processing unprecedented numbers of COVID-19 tests.

8,757
Newly Reported Cases

29.8%
Daily Percent Positive

4,786
Currently Hospitalized

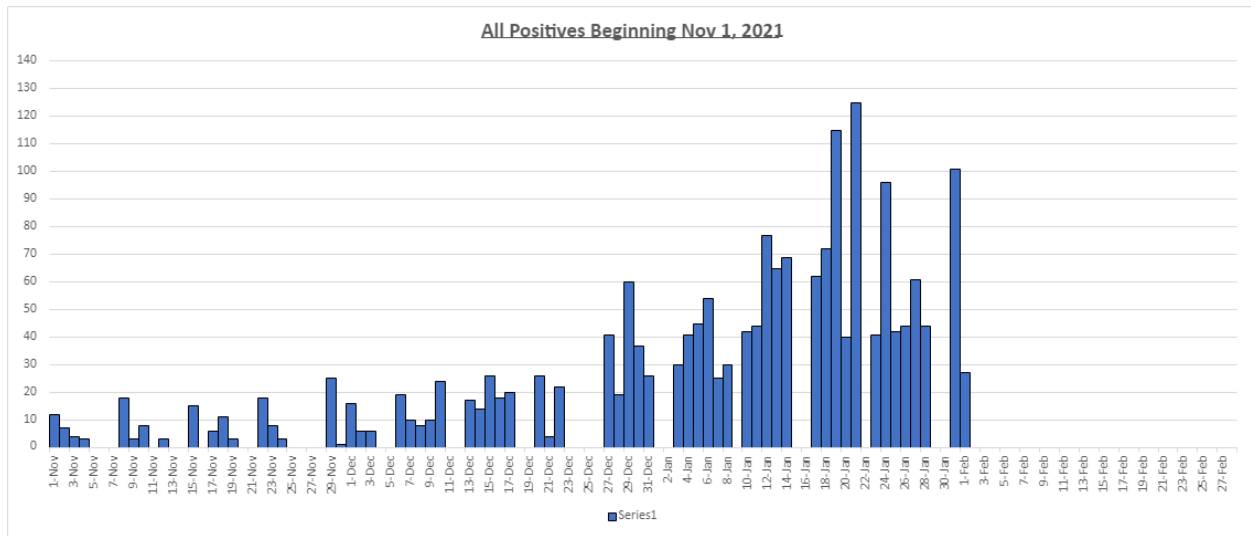
20,817
Total Deaths

75%*
Percent of Adult Population
Vaccinated with at Least One
Dose

71%*
Percent of Adult Population
Vaccinated with Two Doses
or One Dose J&J

*Vaccination percentages rounded to whole numbers.

Madison County Metrics: Total lab confirmed Covid-19 positive cases since Nov.1 2021



MADISON DAILY COVID-19 REPORT

Madison County School Age Children:

