

February 17, 2022

## North Carolina COVID-19 Metrics

Updated Monday-Friday by the NC Department of Health and Human Services at approximately noon. Last updated 12:05 p.m., Feb. 17, 2022.

*Delays in laboratories reporting tests to NCDHHS may occur as laboratories are processing unprecedented numbers of COVID-19 tests.*

**5,583**

Newly Reported Cases

**10.6%**

Daily Percent Positive

**2,711**

Currently Hospitalized

**22,061**

Total Deaths

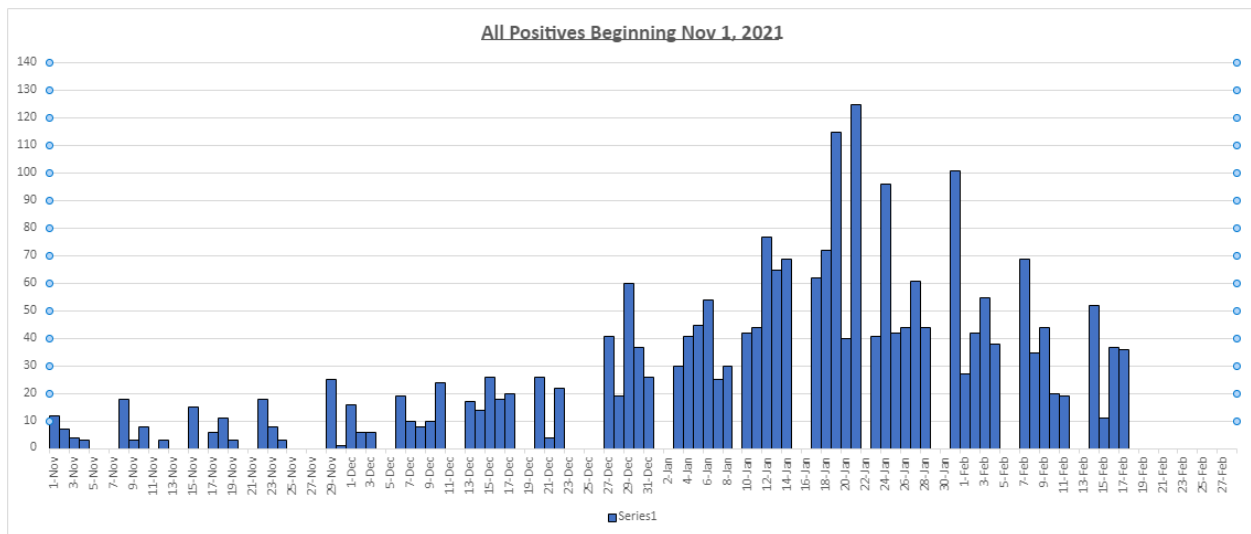
**75%\***

Percent of Adult Population  
Vaccinated with at Least One  
Dose

**71%\***

Percent of Adult Population  
Vaccinated with Two Doses  
or One Dose J&J

### Madison County Metrics: Total lab confirmed Covid-19 positive cases since Nov.1 2021



# MADISON DAILY COVID-19 REPORT

## Madison County School Age Children:

