

February 16, 2022

North Carolina COVID-19 Metrics

Updated Monday-Friday by the NC Department of Health and Human Services at approximately noon. Last updated 12:05 p.m., Feb. 16, 2022.

Delays in laboratories reporting tests to NCDHHS may occur as laboratories are processing unprecedented numbers of COVID-19 tests.

6,079

Newly Reported Cases

12.5%

Daily Percent Positive

2,872

Currently Hospitalized

21,968

Total Deaths

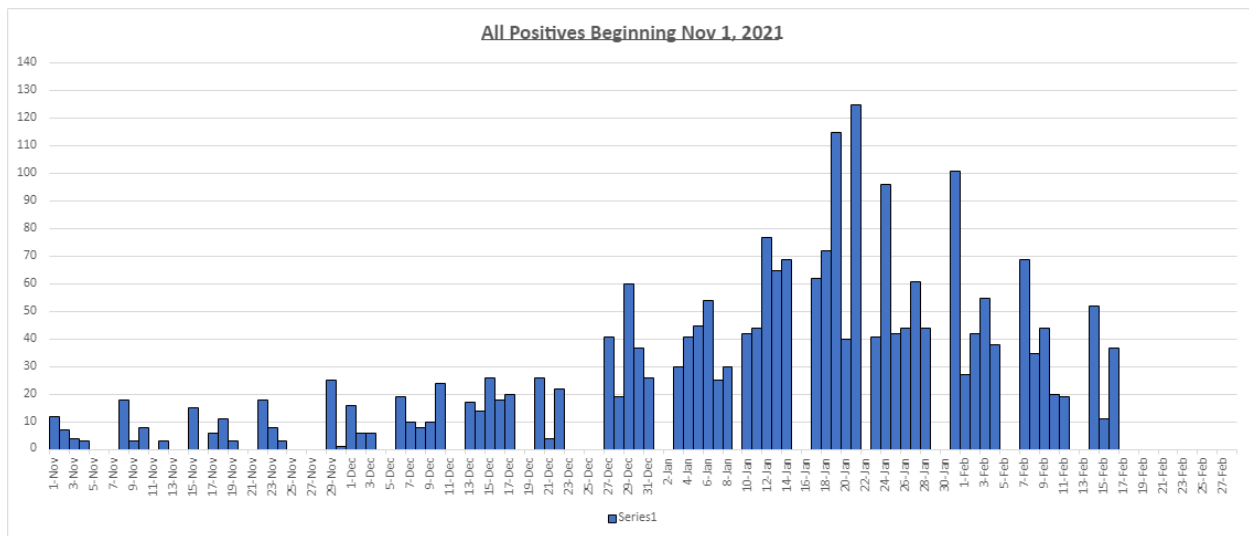
75%*

Percent of Adult Population
Vaccinated with at Least One
Dose

71%*

Percent of Adult Population
Vaccinated with Two Doses
or One Dose J&J

Madison County Metrics: Total lab confirmed Covid-19 positive cases since Nov.1 2021



MADISON DAILY COVID-19 REPORT

Madison County School Age Children:

