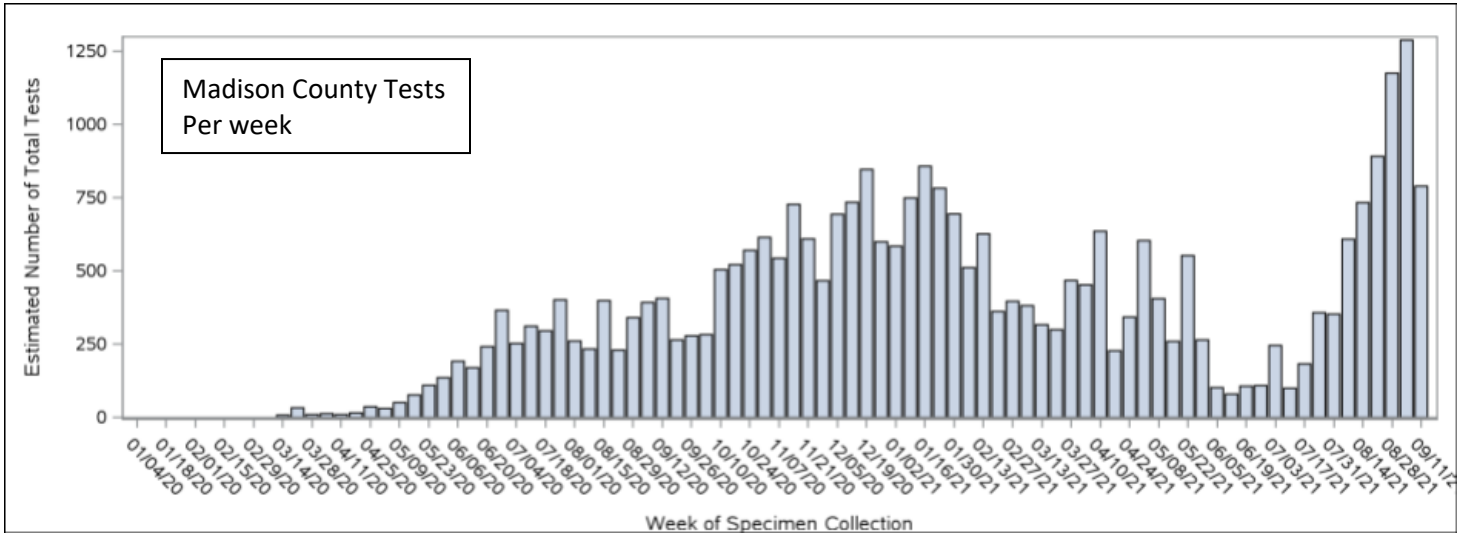


Madison County COVID Update September 14, 2021

Last week the LHI testing team worked 4 days due to the Holiday. 450 individuals were tested at the Madison County Fairgrounds with 70 of those positive. That is a 15.5 % positivity for the week. All of the tests performed were not for Madison County residents, but the number does not take into consideration all of the tests and positives results that come for our hospitals, urgent cares, Hot Springs Health Program and other primary care providers.

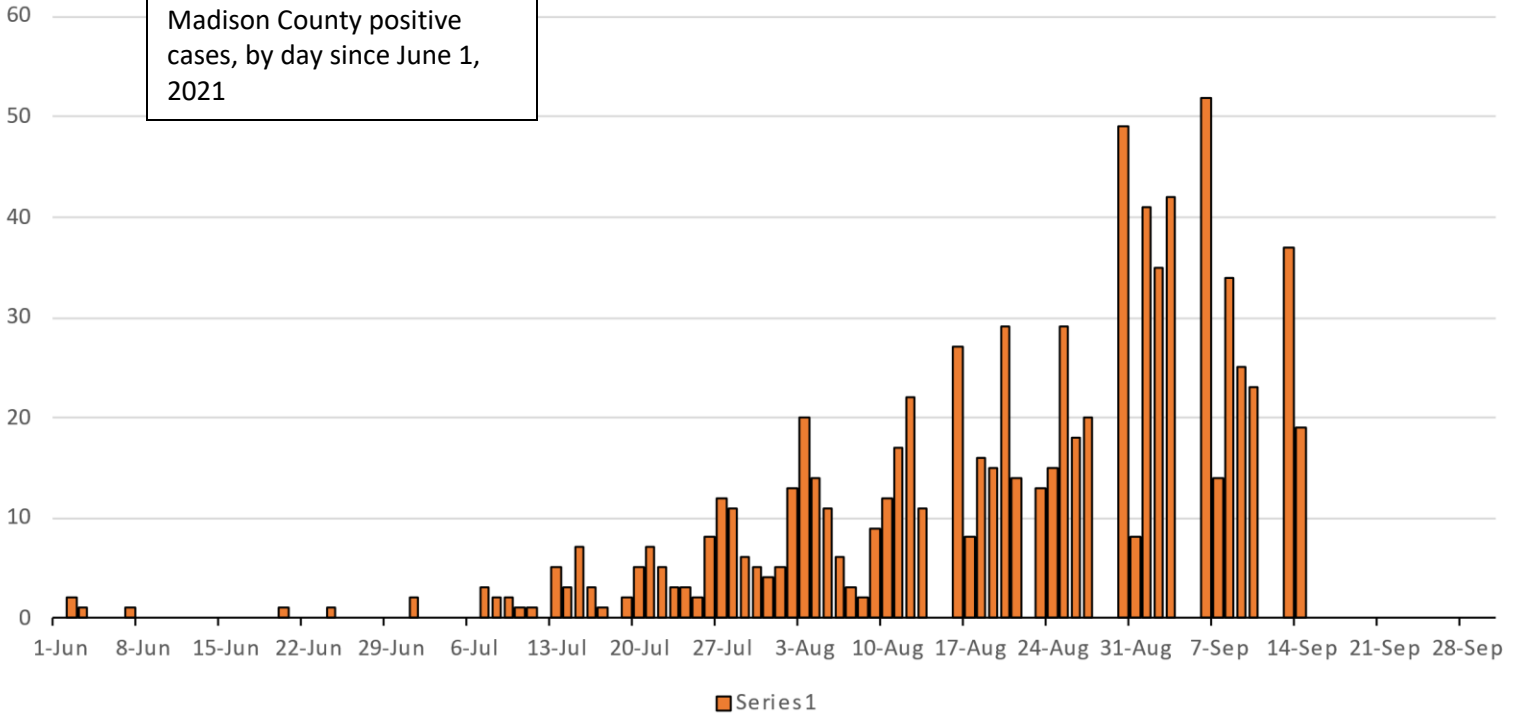
For last week there were a total of 148 new positive COVID cases (Madison County residents), from all sources. We continue to see an all-time high for hospitalizations and sadly are seeing young adults without underlying health conditions die from COVID.



Madison County	Died					
	Yes		No		Total	
	N	(%)	N	(%)	N	(%)
Total Cases	51	(100.0)	2290	(100.0)	2341	(100.0)
Age Group (Years)						
0-17	0	0	323	(14.1)	323	(13.8)
18-24	0	0	319	(13.9)	319	(13.6)
25-49	1	(2.0)	731	(31.9)	732	(31.3)
50-64	1	(2.0)	480	(21.0)	481	(20.5)
65-74	5	(9.8)	233	(10.2)	238	(10.2)
75+	44	(86.3)	204	(8.9)	248	(10.6)

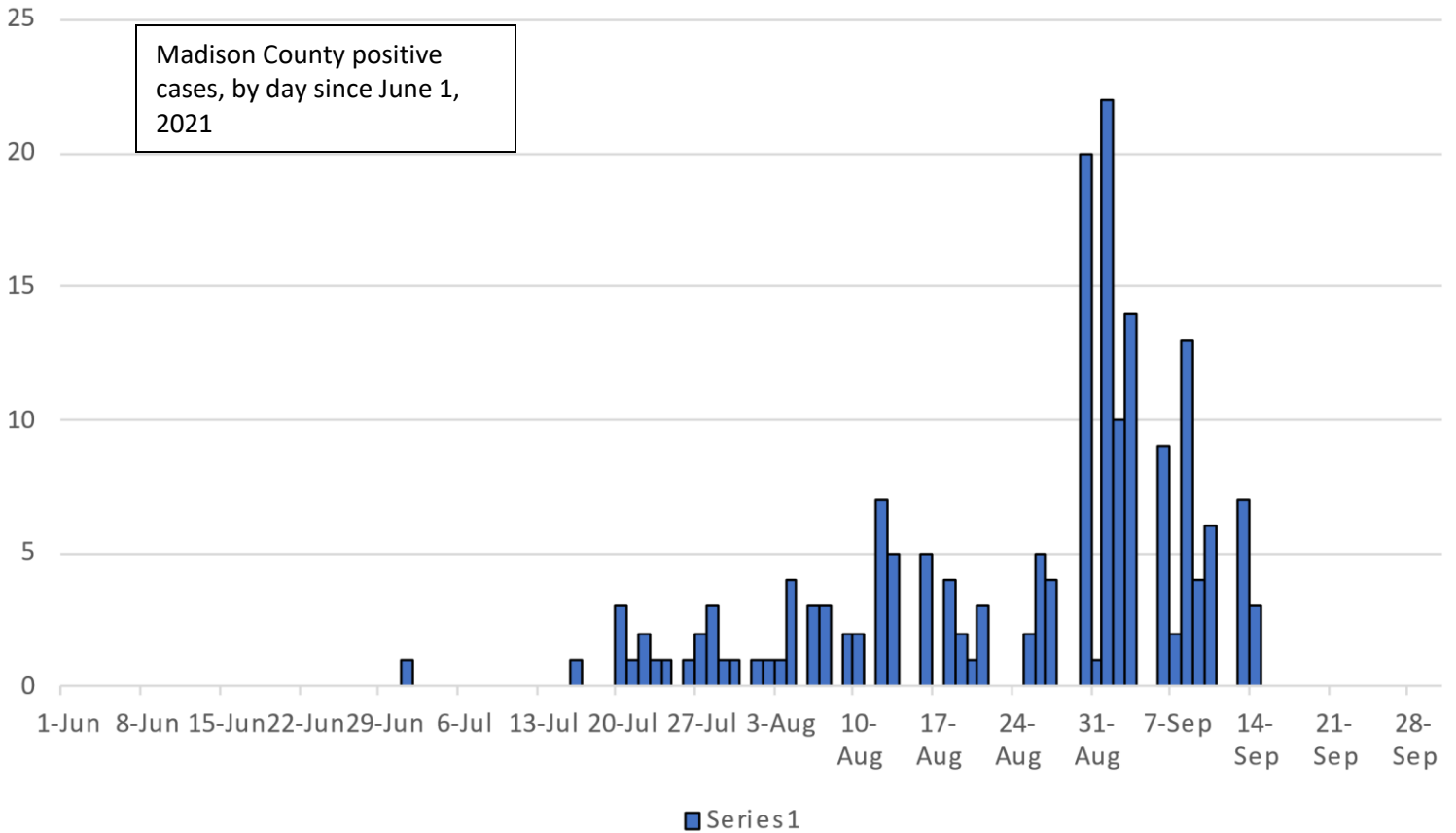
All Positives

Madison County positive cases, by day since June 1, 2021



School Age Positives by Date

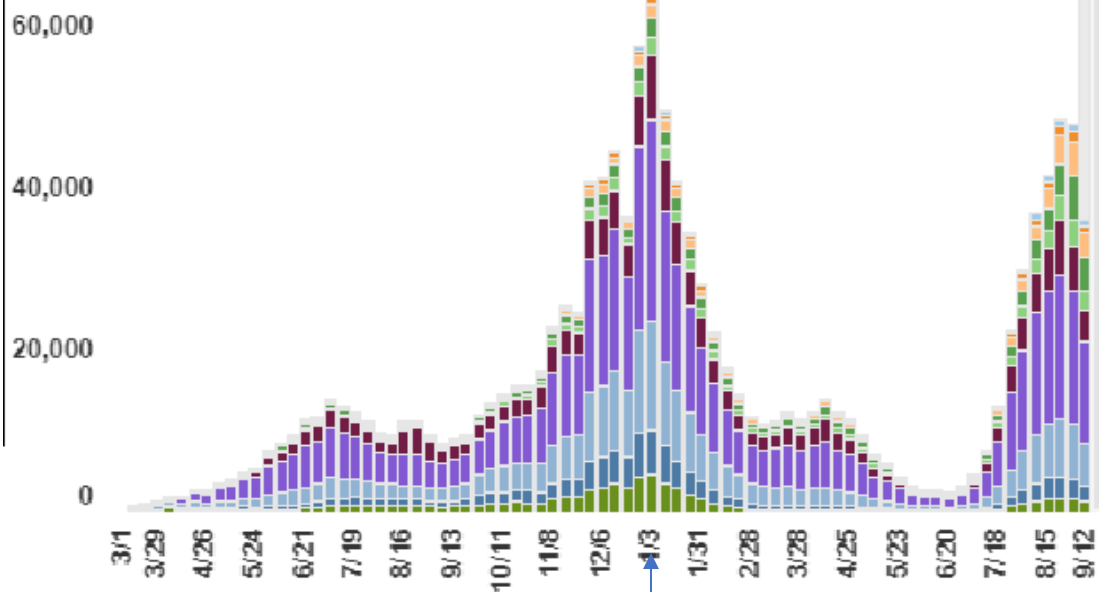
Madison County positive cases, by day since June 1, 2021



Cases by Age for North Carolina



Weekly Cases Trend



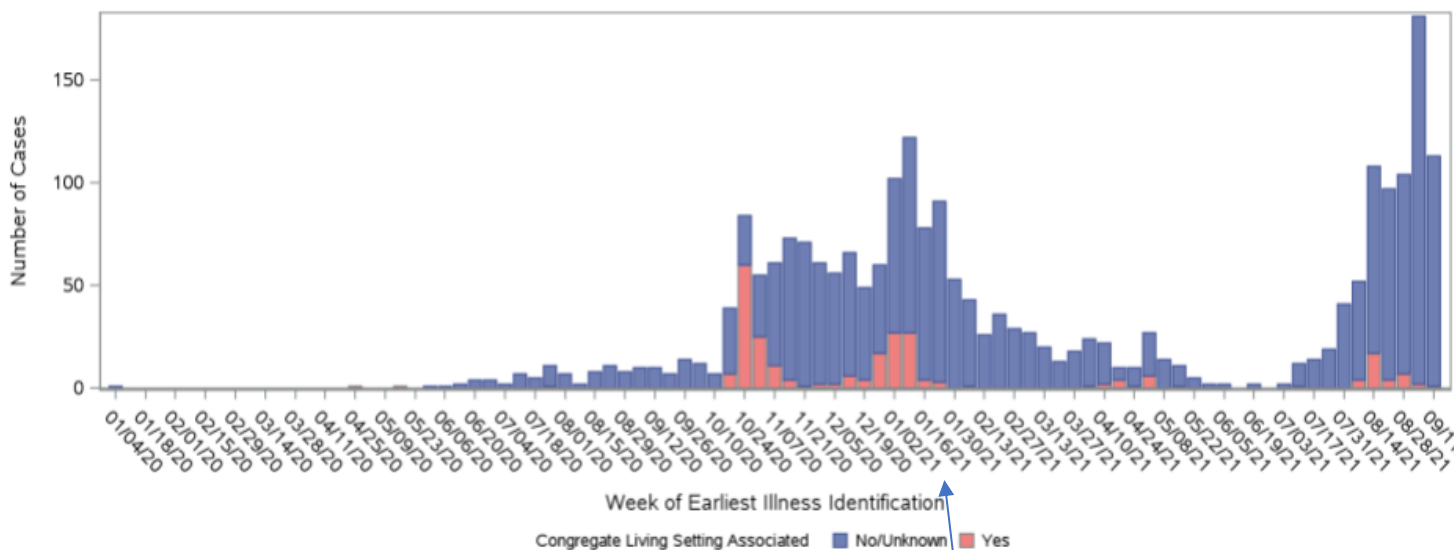
Total Cases

0-1	1% (13,213)
2-4	2% (21,159)
5-9	4% (46,172)
10-14	5% (63,180)
15-17	4% (49,825)
18-24	14% (176,657)
25-49	39% (512,235)
50-64	19% (249,551)
65-74	7% (97,033)
75+	6% (74,194)
Missing Data	171

2021

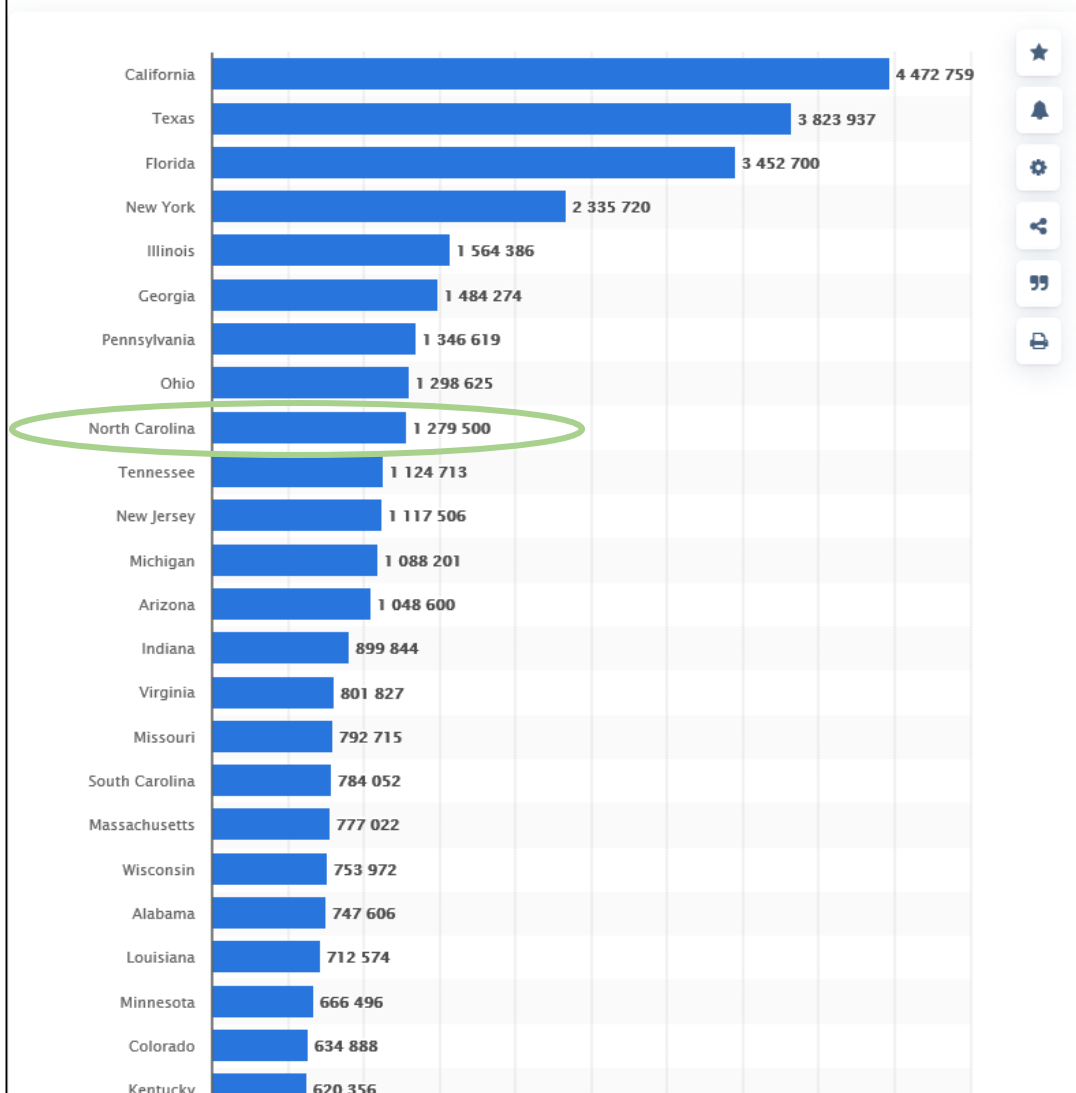
B. CASES BY DATE OF EARLIEST ILLNESS IDENTIFICATION AND CONGREGATE LIVING SETTING ASSOCIATION

This shows whether the number of new cases associated with a congregate living facility is growing. We look at the total number of cases to see whether the proportion associated with congregate living is increasing or decreasing.



2021

Total number of coronavirus (COVID-19) cases in the United States as of September 13, 2021, by state



DOWNLOAD

PDF + XLS + PNG + PPT

Sources
[→ Show sources information](#)
[→ Show publisher information](#)

Release date
September 2021

Region
United States

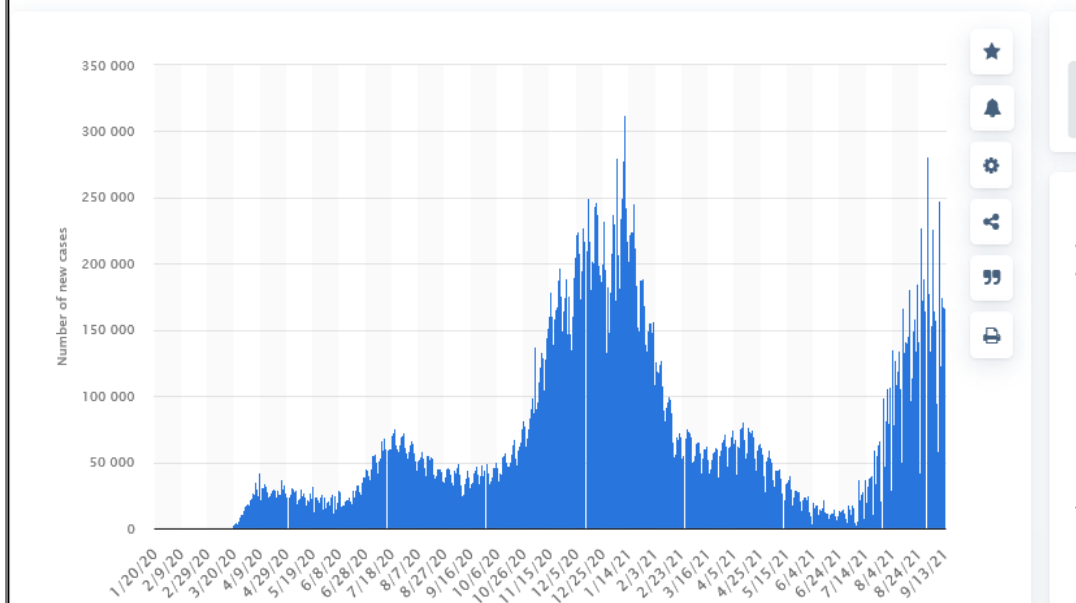
Survey time period
as of September 13, 2021 at 7:45 a.m. ET

Supplementary notes
 "Other" Includes cases repatriated from cruise ships and cases identified in veteran hospitals, the US military and federal prisons.

For further information about the coronavirus (COVID-19) pandemic, please visit our dedicated [Facts and Figures](#) page.

Statista's COVID-19 content is compiled from various sources. Although all of these sources are

Number of new cases of coronavirus (COVID-19) in the United States from January 20, 2020 to September 13, 2021, by day*



DOWNLOAD

PDF + XLS + PNG + PPT

Source
[→ Show sources information](#)
[→ Show publisher information](#)

Release date
September 2021

Region
United States

Survey time period
January 20, 2020 to September 13, 2021

Supplementary notes
 * As of 11:41am CEST, September 13, 2021

North Carolina's Vaccination Progress Summary

North Carolina's Vaccinations Progress Summary includes data from North Carolina's COVID-19 Vaccine Management System (CVMS), as well as data from the federal reporting platform Tiberius for providers that are not currently reporting to the state including Veterans Affairs, U.S. Department of Defense, Federal Bureau of Prisons, and Indian Health Service. This federal data is included in the statewide and county-level estimates of percent of population by age group that has received at least one dose and those fully vaccinated. It is not available for data included in the "Doses Administered by Week" section below or on the "Demographics Data" tab. Data for these sections come only from North Carolina's COVID-19 Vaccine Management System (CVMS), which does not include data from providers not reporting data to the state. Therefore, these sections of the dashboard undercount the true number of doses administered to North Carolina residents. Dashboards are updated every weekday afternoon with the most recently available numbers as of that morning.

First of 2 Doses Administered	Second of 2 Doses Administered	Single Shot Doses Administered	Total Doses Administered
5,456,829	4,977,998	404,353	10,839,180

Percent of Population Vaccinated with at Least One Dose

Total Population



12+ Years of Age



18+ Years of Age



65+ Years of Age



Percent of Population Fully Vaccinated

Total Population



12+ Years of Age



18+ Years of Age

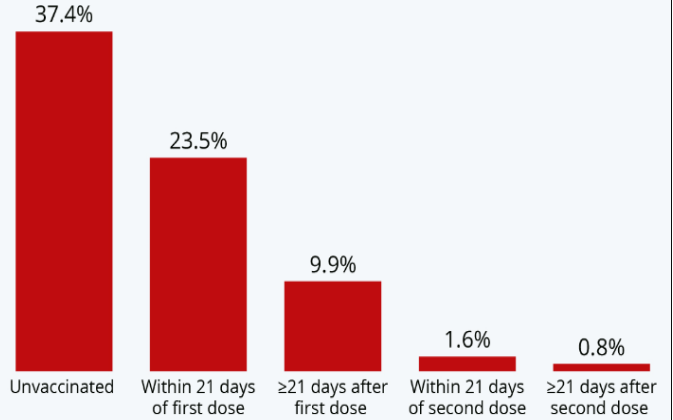


65+ Years of Age



The Effect of Vaccination on Covid-19 Deaths

Share of all deaths involving Covid-19 in England, by vaccination status (2 January - 2 July 2021)

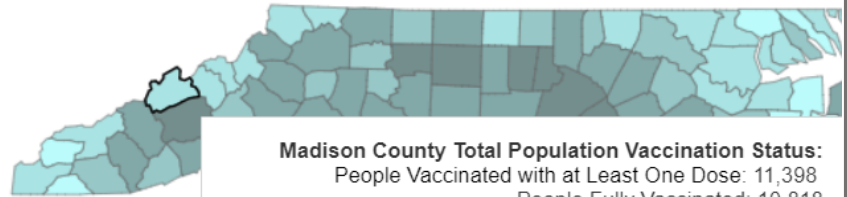


Source: Office for National Statistics



statista

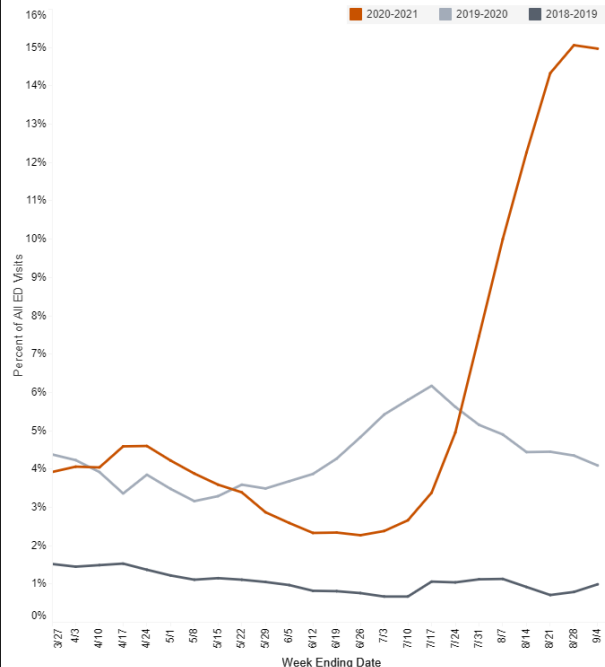
11,398
People Vaccinated with at Least One Dose for Total Population
Madison County



Madison County Total Population Vaccination Status:
 People Vaccinated with at Least One Dose: 11,398
 People Fully Vaccinated: 10,818
 Percent of Population Vaccinated with at Least One Dose: 52%
 Percent of Population Fully Vaccinated: 50%

Percentage of COVID-like Illness (CLI) Emergency Department (ED) Visits

What Percentage of ED Visits this Season are for COVID-like Illness Compared to Previous Seasons?



Hover over icons for information. Source: NC DETECT.

September 14, 2021